

Activities & Events



Bingo!

Every day at 1:00 pm
Come rain or shine, Evergreen residents can be counted on to never miss out on their favorite game!



Spend Valentine's Day w/Mark G.!

Wednesday, 2/14 at 2:30
Enjoy an exciting live performance with Mark G. this Valentine's Day! and if that's not enough, he also returns on Thursday, 2/29 at 3:00 pm!



Make your own Mardi Gras Mask!

Friday, 2/9 at 2:30 pm
These colorful and creative masks are an important part of the Mardi Gras tradition!

EVERGREEN

Where You Live Matters



RESIDENT BIRTHDAYS

Howard K. 2/04
Beverly A. 2/09
Judith L. 2/15
Linda N. 2/19
Robert N. 2/19
Jasmine 2/28

HOLIDAY CELEBRATIONS

2/02 Groundhog Day
2/10 Lunar New Year begins
2/11 Super Bowl Sunday
2/13 Fat Tuesday/Mardi Gras
2/14 Valentine's Day
2/16 Nat'l Caregivers Day
2/19 Presidents' Day
2/22 George Washington's
Birthday
2/29 Leap Day

RESIDENT COUNCIL MEETING

Wednesday, 2/21 at 12:45 pm

RELIGIOUS SERVICES

Bible Study Club
Saturday at 2:00 p.m.
Shabbat: Friday at 5:00 p.m.

Transportation & Concierge Information

Complete peace of mind is our priority in all our communities. Enjoy the journey of senior living starting from the comfort of concierge transportation services.

Tuesdays and Thursdays are available for Medical Appointments. Please schedule your appointments with Jasmin, our Wellness Coordinator at (818) 843-8268 today!

The Beautician

Open Sunday starting at 9:00 am
Please book appointments through our Concierge:
(818) 843-8268

Thursday Afternoon Happy Hours!

Please join your fellow residents every Thursday at 3:00 pm! Special Performance on 2/01 by Pop Vision!



Birthday Party Time

We'll celebrate all of our
**February
Resident Birthdays**
with cake and balloons on their individual birthdays!

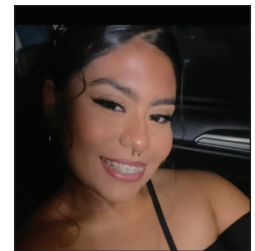


RESIDENT SPOTLIGHT

NORMA H.



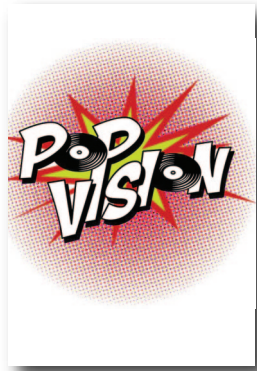
Norma is one of the friendliest people living here in Evergreen. She loves all her friends here in the community that she's made since arriving! One of her favorite things to do is eat! She is such a foodie! Her favorite food is Garlic Lamb Chops. She also loves her daughter, son, and her two grandkids... she is crazy about them. When you see Norma and her smiling face, be sure to smile back!



EMPLOYEE OF THE MONTH JASMINE R. Caregiver

Jasmine is one of our many special caregivers here in Evergreen. She loves all her residents and getting to know their different personalities. She loves the family she has created here in Evergreen. Her favorite food is green Peruvian spaghetti and when she's not at work you can find her at the gym. February 16th is National Caregivers Day so be sure to thank Jasmine (and all our other caregivers!) for the wonderful care she provides to all our residents!

February Highlights



POPVISION LIVE PERFORMANCE

Thursday, 2/01 | 3:00 pm

We missed out on Popvision's visit in January, so this upbeat Top 40 cover band will be here to tout their tunes in February!

KARAOKE MONDAYS

Every Monday | 3:30 pm

Residents love nothing more (except perhaps, Bingo!) than singing along to their favorite tunes every Monday afternoon!



HEART WREATH CRAFT

Friday, 2/02 | 2:30 pm

Nothing speaks love more than a heart festooned with flowers to hang on your door! Come and make your own special wreath of love!

SHOPPING DAYS

99¢ Store: 2/07 & Target: 2/19
2:00 pm

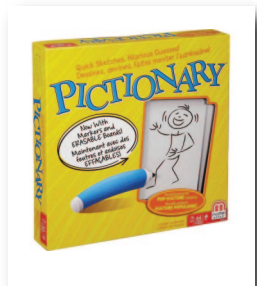
If you're looking to stock up on some of your monthly essentials, or just looking to get out and do some shopping, be sure to join us on our shopping days!



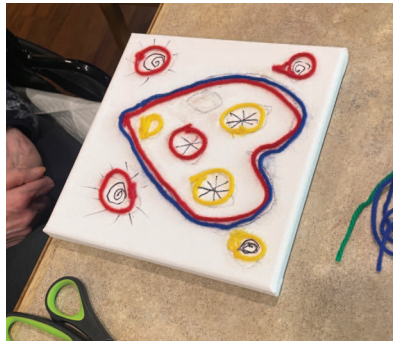
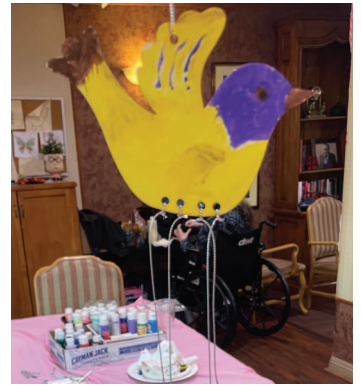
PICTIONARY

Thursday, 2/08 | 3:00 pm

This week's Happy Hour will also allow you an opportunity to hone in on your communication skills while using your artistic skills to do so!



MAKING MEMORIES



LUNAR NEW YEAR

CROSSWORD

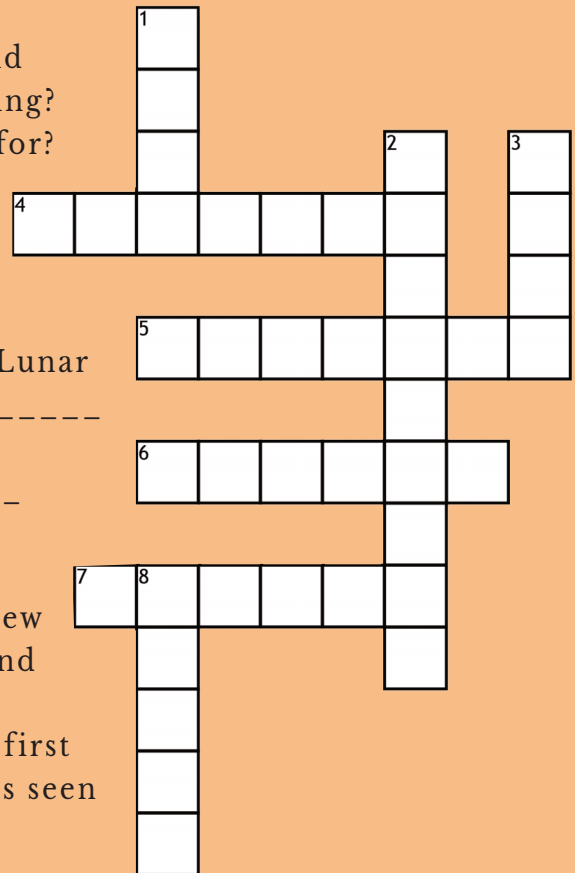
*Crossword answers will be available at the Concierge on the 15th of the month.

ACROSS

- 4 What Asian festival follows the Lunar New Year and marks the end of winter and the beginning of Spring?
- 5 How many days is the Lunar New Year celebrated for?
- 6 2024 marks the Lunar New Year of what animal?
- 7 How many animals are in the Lunar Zodiac?

DOWN

- 1 The Dragon dance is often performed during the Lunar New Year, but it is also common to see the _____ dance performed as well.
- 2 Often filled with money, these red _____ symbolize good wishes and luck for the new year ahead.
- 3 The first day of the Lunar Year is marked by the new _____ that appears between January 21st and February 20th.
- 8 What element are you not supposed to use on the first and second day of the Lunar New Year because it is seen as washing your good fortune away?



Check out community photos on our social media.



REACH OUT TO OUR
FAMILY SPECIALIST

David Rogatsky

TO ARRANGE FOR A
TOUR TODAY!

(818) 843-8268

OUR SERVICE PLEDGE

We understand that we are responsible for the delivery of excellent Resident service. We represent our company, our communities, and ourselves. At each "service moment", we will initiate a warm and friendly greeting, treat residents with care and understanding, and communicate clearly. We will do our part to implement the essentials of service excellence.

MEET OUR TEAM...

Amber Leigh

Executive Director

Joan Boonin

Wellness Director

Jasmin Saldivar

Wellness Coordinator

Rosie Julinek

Business Office Manager

David Rogatsky

Family Specialist

Laiza Palacios

Activity Director

Luis Pacheco

Executive Chef

Josue Paulin

Dining Director

225 North Evergreen Street, Burbank CA 91505 / (818) 843-8268 / license: 197609022

www.evergreenretire.com