

EVERGREEN

JUNE 2026 | COMMUNITY NEWSLETTER



Handwritten signature



City Walk
June 30 | 12:00
Enjoy the beautiful
June weather with a
relaxing walk around
the city



Resident Spotlight **LEE FORBES**

Lee has been a wonderful part of the Evergreen community for over 10 years. He is a longtime comic fan and is well respected in the film industry. Throughout his life, Lee has worked on many different productions and has plenty of interesting stories to share. You can almost always catch him smiling and ready for a good conversation.



RESIDENT BIRTHDAYS!

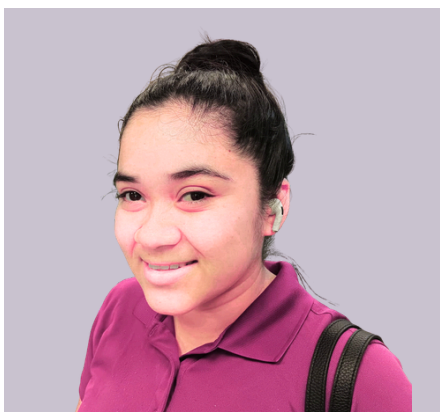
- 6.1 - Frances Y.
- 6.2 - Alma Marie N.
- 6.5 - Robert B.
- 6.12 - Sylvia S.
- 6.12 - Darlene P.
- 6.15 - Pat F.
- 6.16 - Carol S.
- 6.23 - Tani B.
- 6.25 - Ronda R.

EMPLOYEE BIRTHDAYS!

- 6.4 - Ana G.
- 6.9 - Angelica M.
- 6.29 - Victor

JUNE HOLIDAYS:

- 6.19 - Juneteenth
- 6.21 - Father's Day



EMPLOYEE OF THE MONTH

REBECA PORTILLO – HOUSEKEEPER

Rebeca brings kindness and care into her work every day. She is known for her positive attitude, strong work ethic, and willingness to always lend a helping hand. Rebeca helps create a warm and welcoming environment for both residents and staff.



Active Living at Evergreen

JUNE ACTIVITIES HIGHLIGHTS

Glow Rave - June 4

Wear your brightest colors and glow accessories!

Rainbow Rally - June 11

Bring some color to the day by dressing in colorful cheerful outfits.

Tie Time - June 18

Dress to impress with your favorite tie, bow tie, or fun neckwear.

Pirate Party - June 25

Ahoy matey! Break out the pirate hats, stripes, and eye patches for a playful pirate themed happy hour.

Happy
Hour
Dress Up
Themes



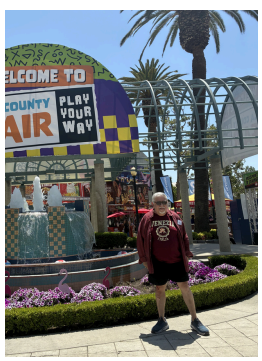
EXCITING NEWS! WE ARE NOW OFFERING OUTINGS TWICE A WEEK. BE SURE TO CHECK THE CALENDAR FOR REGULAR OUTINGS EVERY MONDAY AND TUESDAY THROUGHOUT THE MONTH.

Ice Cream Party June 5 | 3:00

Join us for ice cream and a few lighthearted ice breakers as we spend time getting to know each other a little better.

Tea Party and Flowers June 12 | 2:30

Come enjoy tea and sweet treats, then stay to create a beautiful flower arrangement to take home.



Reach out to our family specialist,
Tari Gottlieb,
 to arrange a tour today!
 (818) 843-8268

OUR SERVICE PLEDGE

We understand that we are responsible for the delivery of excellent Resident service. We represent our company, our communities, and ourselves. At each "service moment", we will initiate a warm and friendly greeting, treat residents with care and understanding, and communicate clearly. We will do our part to implement the essentials of service excellence.

MEET OUR TEAM

Tannya Quezada	Executive Director
Rosie Julinek	Business Office Manager
Tari Gottlieb	Family Specialist
Amelia Hernandez	Move-In Specialist
Paige Goodstein	Activities Director
Josue Paulin	Dining Director

Check out our community photos on social media

Visit our website: www.evergreenretire.com

