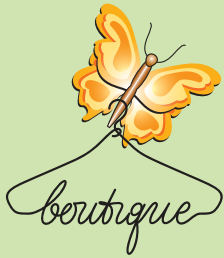


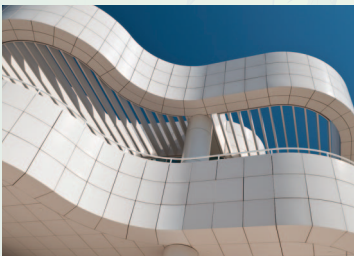
Activities & Events



Butterfly Boutique
Tuesday, 3/04 at
A shopper's delight, the
Butterfly Boutique visits
Evergreen once a month to
share their wares.



Welcome to Ireland!
Monday, 3/17 at noon
What better day to make a
virtual visit to Ireland than
on St. Patrick's Day? Enjoy
a day enjoying tasty Irish
foods and celebrating St.
Patrick's Day!



Outing to Getty Center
Tuesday, 3/25 at noon
Home to Manet's *Jeanne*
(Spring), Van Gogh's *Irises*,
and Turner's *Modern Rome*,
and many other early
paintings, Getty's painting
collection is second to
none.

EVERGREEN

Where You Live Matters



RESIDENT BIRTHDAYS

Thersea B. 3/03
Castro S. 3/18
Joan B. 3/29

HOLIDAY CELEBRATIONS

3/02 Academy Awards
3/04 Fat Tuesday / Mardi Gras
3/05 Ash Wednesday
3/13 Purim Begins
3/17 St. Patrick's Day
3/20 Spring Begins

RESIDENT COUNCIL MEETING

Wednesday, 3/19 at 2:30 pm

RELIGIOUS SERVICES

Bible Study Club
Saturday at 2:00 p.m.
Shabbat: Friday at 5:00 p.m.

Transportation & Concierge Information

Complete peace of mind is our priority in all our communities. Enjoy the journey of senior living starting from the comfort of concierge transportation services.

Tuesdays and Thursdays are available for Medical Appointments. Please schedule your appointments with Jasmin, our Wellness Director at (818) 843-8268 today!

The Beautician

Open Sunday starting at 9:00 am
Please book appointments through our Concierge:
(818) 843-8268

Thursday Afternoon Happy Hours at 3:00 pm!

Please join your fellow residents for these entertaining afternoons!

3/06: Live Music w/ Preston
3/13: Live Music w/ David Kaufman
3/20: Live Music w/ Pianist Hugo Pazmino
3/27: Live Music w/ Popvision

Celebrate Your Birthday!

We'll celebrate all of our
March Resident Birthdays

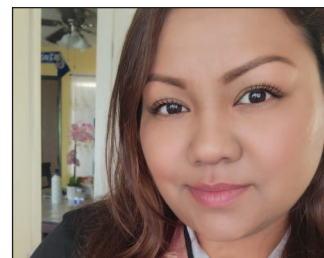
with cake and balloons on their individual birthdays!



RESIDENT SPOTLIGHT JOAN B.



Joan has been a resident here at Evergreen for five years now, and with every year that passes, she brings more and more laughter with her. Her favorite thing to do is play BINGO, and she never misses a single day. If she isn't playing bingo, this avid gamer is at the poker table, and she's one hell of a poker player! Joan is so sweet, but is occasionally a spicy one, too! No matter whether she's being sweet or spicy, we enjoy Joan either way! She is an amazing resident here at Evergreen.



EMPLOYEE OF THE MONTH JOCELYN Server

Congrats to Jocelyn who has been named our Employee of the Month. She is a wonderful server here at Evergreen, and is one of our sweetest and hardest workers. Despite a small language barrier, she always manages to get the job done. Jocelyn comes to work every day with a cheery smile and a sprightly "hello" for everyone! Thank you, Jocelyn, for being so amazing!

March Highlights



KARAOKE MONDAYS

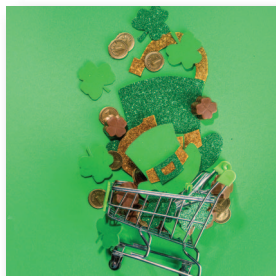
Mondays at 3:45 pm

Sing along to your favorite songs every Monday!

FRIDAY ART CLASSES

Fridays, 3/7, 21, 28 at 2:30 pm

For three March Fridays, the inner artist comes out in all our residents when they take part in these creative classes.



SHOPPING EXCURSIONS

1:30 pm

Tues. 3/04

Dollar Store

Mon. 3/10

Grocery Outlet

Mon. 3/24

Marshalls

NAIL PAINTING W/ LAIZA

Monday, 3/12 at 12:00 pm

Pretty up your nails with Laiza before St. Patrick's Day. Will you want them painted green?



POETRY READING

Weds., 3/26 at 2:30 pm

Home by Whitney Hanson is a poetical map to finding peace, identity and direction involving a woman and interactions with her bees.

WELCOME TO EL SALVADOR

Monday, 3/31 at noon

Experience this Central American Country through some of its favorite foods!



Making Memories...



ST. PATRICK'S DAY CROSSWORD

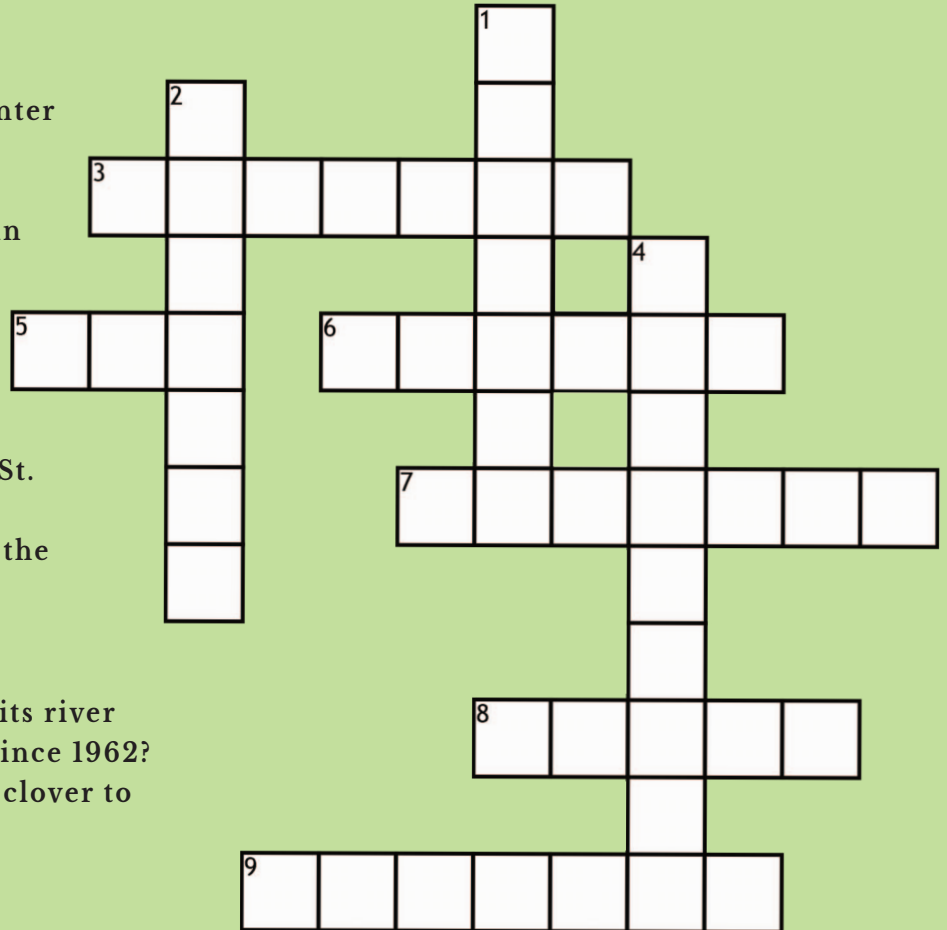
*Crossword answers will be available at the Concierge on the 15th of the month.

ACROSS

- 3 Where was St. Patrick born?
- 5 What does the circle at the center of a Celtic cross represent?
- 6 According to lore, St. Patrick drove the _____ in Ireland, which depends on the will of the people.
- 7 "Erin go bragh" means Ireland
- 8 What color is associated with St. Patrick's Day?
- 9 What country is Saint Patrick the patron saint of?

DOWN

- 1 What American city has dyed its river green every St. Patrick's Day since 1962?
- 2 St. Patrick used the three leaf clover to illustrate the concept of the _____.
- 4 St. Patrick died on March _____.



Check out community photos on our social media.



REACH OUT TO OUR
FAMILY SPECIALIST

Tari Gottlieb

TO ARRANGE FOR A
TOUR TODAY!
(818) 843-8268

OUR SERVICE PLEDGE

We understand that we are responsible for the delivery of excellent Resident service. We represent our company, our communities, and ourselves. At each "service moment", we will initiate a warm and friendly greeting, treat residents with care and understanding, and communicate clearly. We will do our part to implement the essentials of service excellence.

MEET OUR TEAM...

Tannya Quezada

Executive Director

Jasmin Saldivar

Wellness Director

Rosie Julinek

Business Office Manager

Tari Gottlieb

Family Specialist

Amelia Hernandez

Move-In Specialist

Laiza Palacios

Activity Director

Michael Tito

Executive Chef

Josue Paulin

Dining Director

225 North Evergreen Street, Burbank CA 91505 / (818) 843-8268 / license: 197609022

www.evergreenretire.com